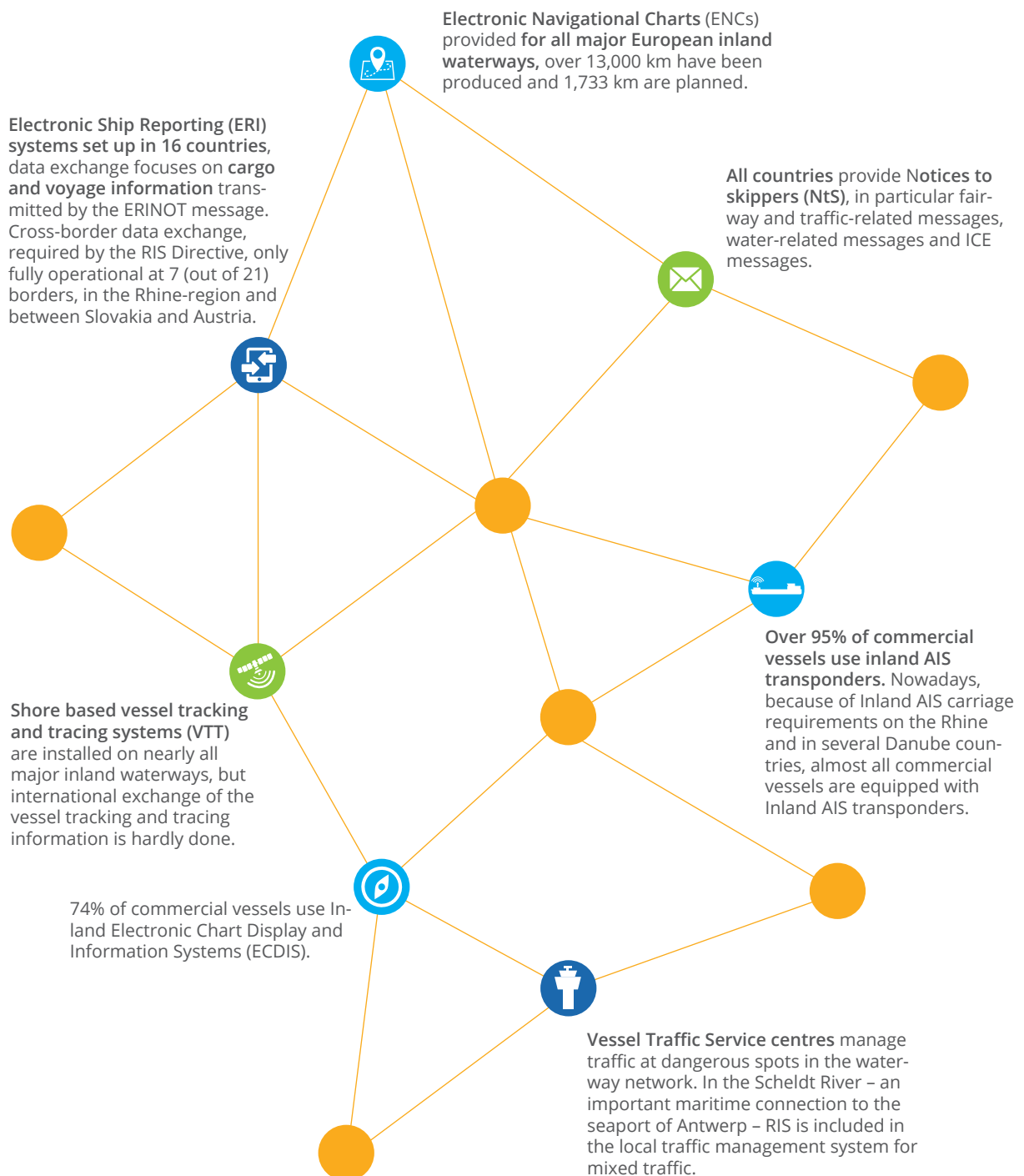




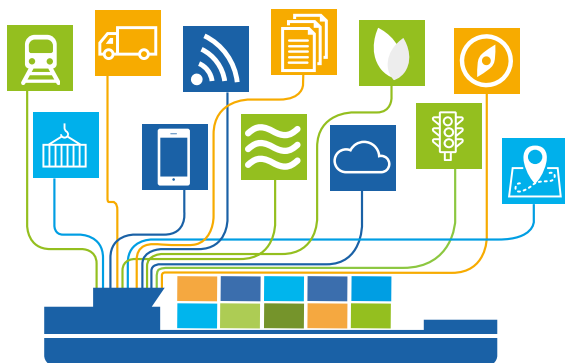
# Digitalisation at work

## River Information Services today

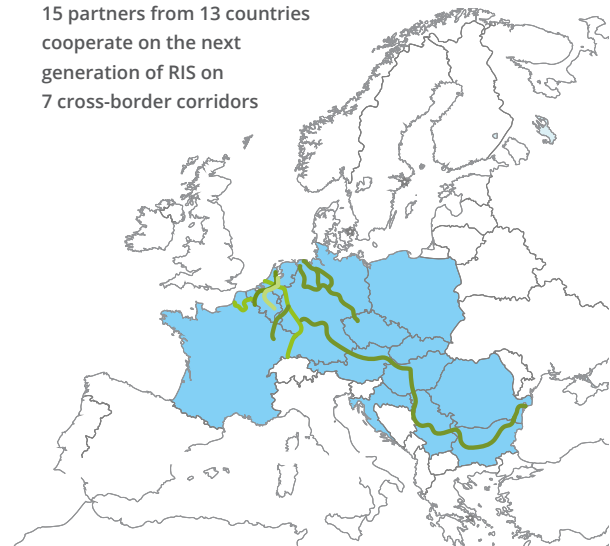


# River Information Services go logistics

Within the **RIS COMEX** project, waterway managers aim to make River Information Services (RIS) available throughout transport corridors of the waterway network. The information services are provided to trusted parties and can finally be accessed and shared by waterway users and related logistics partners following harmonised access rules. RIS corridor services aim at single window support for route planning, voyage planning, traffic planning and reporting duties on a European scale, at present integrating the fragmented local systems and paving the way for full logistics integration.



15 partners from 13 countries cooperate on the next generation of RIS on 7 cross-border corridors



## Towards a European single window

### Traffic planning



Optimisation of lock and bridge schedules in cross-border corridors to reduce waiting times, the overall duration of the voyage and to optimise energy use.

### Logistics planning



Single window access for the exchange of vessel and cargo position information among logistics users to make waterway transport visible in the digital supply chain.

### Route planning



Provision of network information including its operation status to support route planning. Actual and forecast information on the fairway allowing for more efficient planning.

### Less red tape



Single window services limit multiple reporting. In addition, data are collected and analysed for a more efficient use of the waterway infrastructure.

### Voyage planning



Supporting voyage planners with real-time and predicted traffic information and interface to traffic planning services to ensure best-possible ETAs.

### Berth management



Berths are the waterway parking spaces. The tool provides online information about available berths & their facilities and allows booking of berth space.