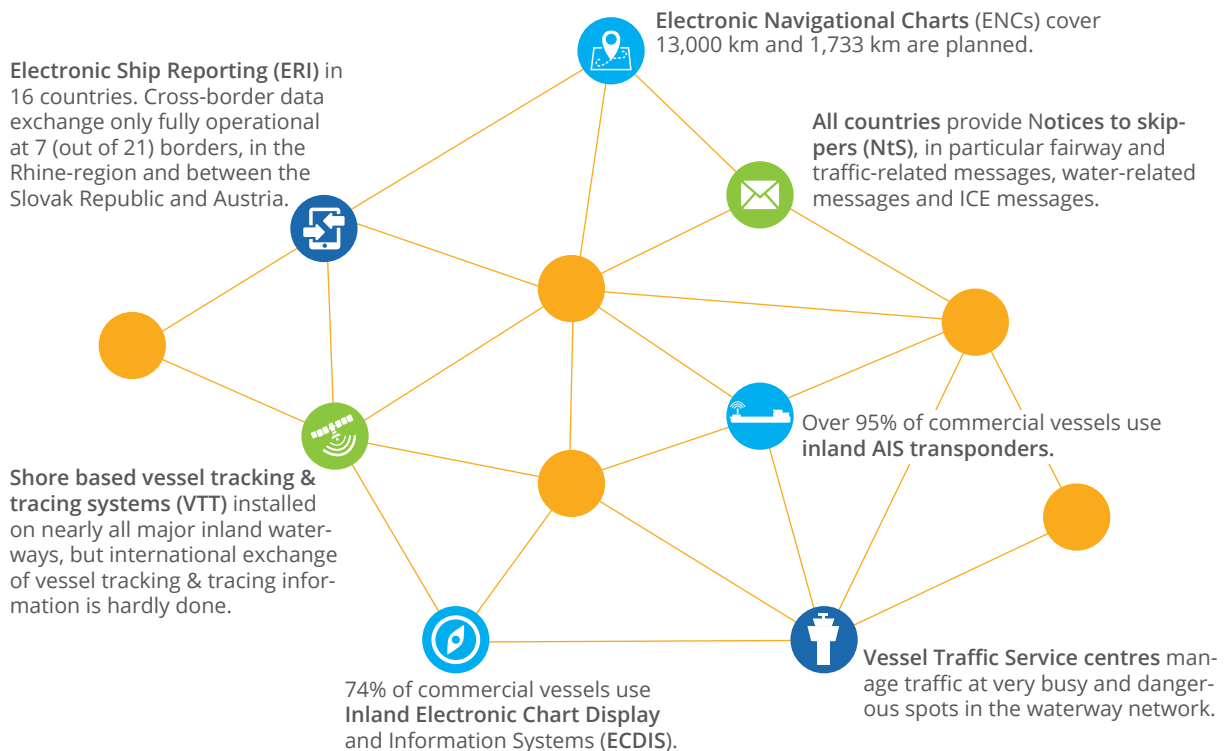


Digitalisation at work

River Information Services today



Next steps for a Digital Inland Waterway Area connected to other modes

Low hanging fruit

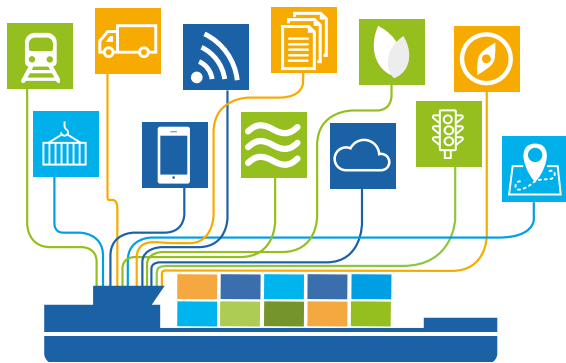
- Realise Corridor Management Services on the main European inland waterway transport corridors
- Realise a single point of access to RIS information for the users of European inland waterways
- Make available trans-corridor Fairway Information Services and share vessel position information with the consent of the data owner across corridors
- Set up common solutions for the provision of Corridor RIS Services by waterway managers and realise a common governance structure for reliable quality data provision
- Make use of existing European solutions such as ERDMS and EHDB and support further development by practical application.

Strategic direction

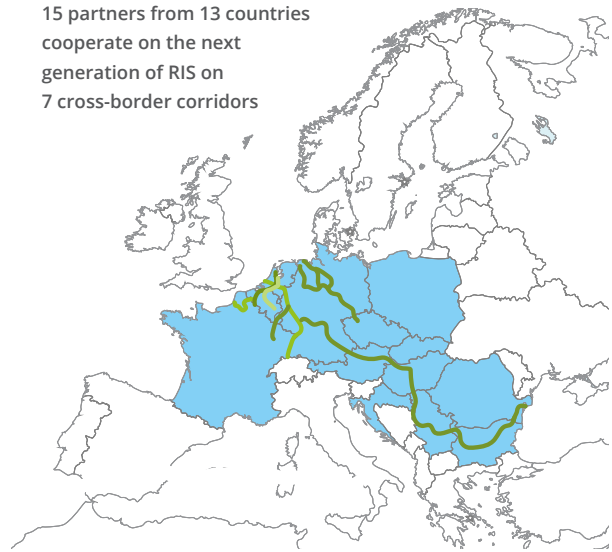
- Set the scene for realising the DINA strategy in a public-private cooperative environment utilising EU funding instruments
- Support the evaluation and the revision of the RIS Directive to get RIS fit for the digital waterway age
- Make waterway infrastructure digitally fit by installing intelligent sensors along the waterways for measuring basic infrastructure conditions (e.g. water levels, bridge clearances)
- Set up dedicated test stretches on waterways to enable autonomous sailing pilots in a controlled test environment
- Set up user centered design approach for future River Information Services, including an accelerated time-to-market of new services and applications, making use of innovative instruments such as open interfaces and hackathons
- Facilitate RIS standardisation in Europe using existing standardisation bodies (e.g. CESNI) and related Expert Groups.

River Information Services go logistics

Within the **RIS COMEX** project, waterway managers aim to make River Information Services (RIS) available throughout transport corridors of the waterway network. The information services are provided to trusted parties and can finally be accessed and shared by waterway users and related logistics partners following harmonised access rules. RIS corridor services aim at single window support for route planning, voyage planning, traffic planning and reporting duties on a European scale, at present integrating the fragmented local systems and paving the way for full logistics integration.



15 partners from 13 countries cooperate on the next generation of RIS on 7 cross-border corridors



Towards a European single window

Traffic planning



Optimisation of lock and bridge schedules in cross-border corridors to reduce waiting times, the overall duration of the voyage and to optimise energy use.

Logistics planning



Single window access for the exchange of vessel and cargo position information among logistics users to make waterway transport visible in the digital supply chain.

Route planning



Provision of network information including its operation status to support route planning. Actual and forecast information on the fairway allowing for more efficient planning.

Less red tape



Single window services limit multiple reporting. In addition, data are collected and analysed for a more efficient use of the waterway infrastructure.

Voyage planning



Supporting voyage planners with real-time and predicted traffic information and interface to traffic planning services to ensure best-possible ETAs.

Berth management



Berths are the waterway parking spaces. The tool provides online information about available berths & their facilities and allows booking of berth space.