

Who we are

Inland Navigation Europe (INE) is the platform of national & regional waterway authorities and bodies promoting waterway transport.

Navigable waterways transport large volumes of raw materials which are essential for Europe's industrial production and a wide range of supporting activities.

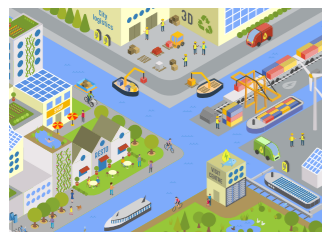
We strongly believe in a multimodal Europe with waterways as backbone to make mobility and logistics more sustainable benefiting European industry, environment and society.

Our policy agenda covers

- A quality network of waterways which is reliable, climate responsive and well connected.
- Effective digital inland waterway services to facilitate smart, safe and secure mobility & logistics.
- Working towards a long-term policy that rewards innovation and the transition towards zero-emission.

Our mission

Inland waterway authorities within INE manage and develop navigable waterways into a connecting network that contributes to the welfare and wellbeing of Europe.



More and better transport by water

With annual congestion costs in the EU exceeding 100 billion euro and carbon emissions in transport growing, making transport by water easier-to-use for goods and people is a top priority. We actively work towards optimising the waterway network into a seamless multi-modal network, so customers can make the optimal mobility and logistics choice. By investing in innovation, we provide space to entrepreneurship on and along the water, be it for new transport concepts, circular economy, smart technology or clean energy.



Going beyond transport

Waterways determine and give character to our landscapes. Waterway authorities are fully committed to the multi-functionality of waterways in cooperation with all waterway users in a changing climate. We protect critical infrastructure, invest in water resilience, anticipate to floods and work on solutions in the event of water shortages. We produce energy from hydropower at locks, ensure water supply, offer space for sustainable recreation and tourism on and along rivers and canals to boost regional development. Last but not least, we constantly focus on increasing the quality of the environment to enhance biodiversity.

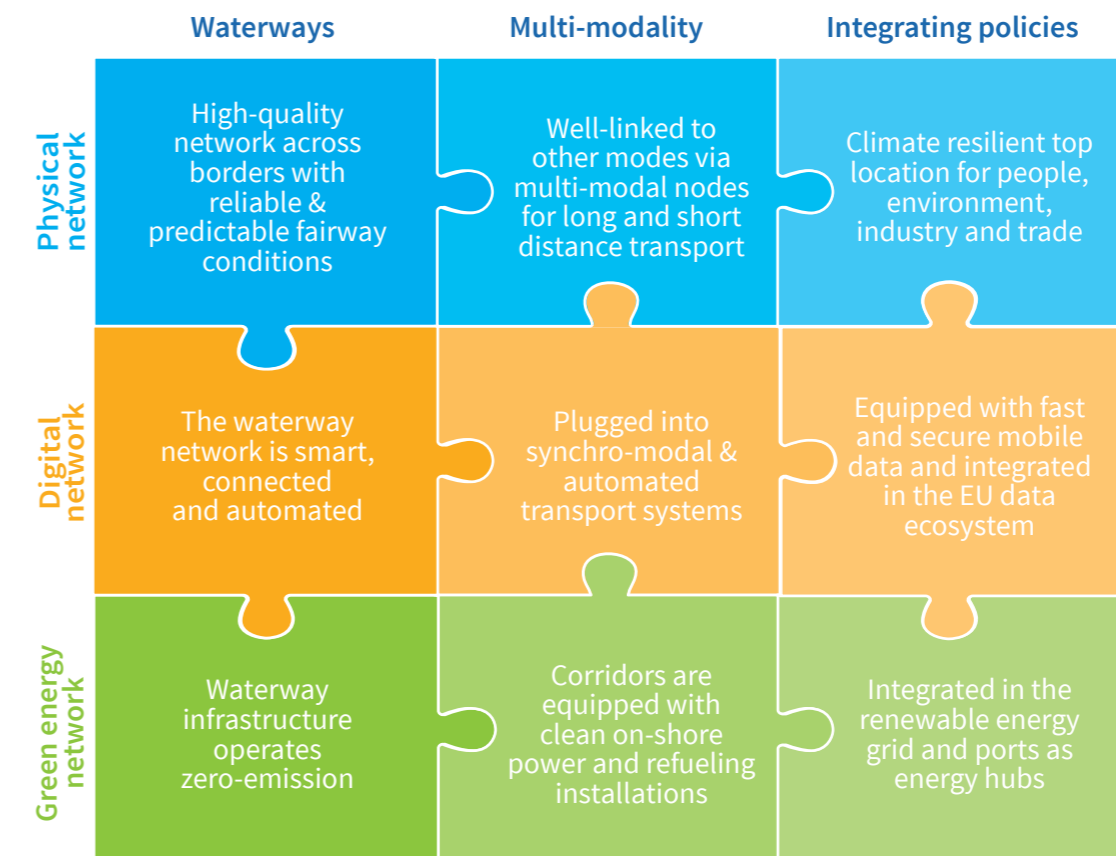
Our vision



Resilient waterways

To meet increasing demand for public transport and city logistics, expansion of existing land infrastructure is challenging and expensive. For centuries, rivers and canals have been arteries for trade and commerce, connecting ports with inland centres of industry, agriculture and consumption. Clean and smart inland shipping decreases costly congestion in and around cities. At the same time waterways are much more than transport corridors. Waterways and their waterfront are to be a shared, safe and resilient space where it is good to live, work, enjoy and trade and where burst of activities co-exist. Investing in resilience is investing in preparedness, which is a continuous task and shared responsibility towards today's and future generations.

Fit-for-future waterways



How we work towards resilient waterways



Alternative refueling



Reliable infrastructure for modal shift



Sustainable tourism and recreation



Urban logistics

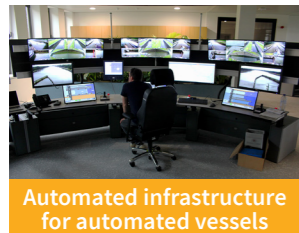


Cross-border information services for users

Investing together to be prepared



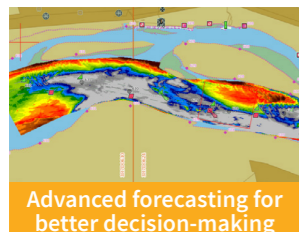
Nature based solutions



Automated infrastructure for automated vessels



Combating invasive species



Advanced forecasting for better decision-making



Flood protection



Protecting critical infrastructure



Water supply for drinking, industry & agriculture



Water scarcity and drought management



Renewable energy & smart water use at locks

Our Members



Koninklijke Binnenvaart Nederland (NL)



viadonau - Österreichische Wasserstraßen - Gesellschaft mbH (AT)



Vlaamse Overheid - Departement Mobiliteit & Openbare Werken (BE)



Voies navigables de France (FR)



Administração dos Portos do Douro, Leixões e Viana do Castelo - APDL (PT)



Administrația Canalelor Navigabile - ACN (RO)



AFDJ Galati - River Administration of the Lower Danube (RO)



Agencia Interregionale per il Fiume Po INTERREGIONAL AGENCY FOR THE PO RIVER (IT)



De Vlaamse Waterweg nv (BE)



Ministère de la Mobilité et des Travaux Publics (LU)



Ministerstwo Infrastruktury (PL)



Ministry of Construction, Transport and Infrastructure (RS)



Ministry of Transport and Construction of the Slovak Republic (SK)



Ředitelství vodních cest České republiky - RVCC (CZ)



Service Public de Wallonie (BE)



Swedish Transport Administration - Trafikverket (SE)



Kammerunion Elbe/Oder (DE)



Haven Brussel - Port Bruxelles (BE)



Rádiós Segélyhívó és Infokommunikációs Országos Egyesület - RSOE (HU)

Brussels' Office



Karin De Schepper
general management & public affairs
Caroline van de Leur
office & communications management